**"Red Power" and "Lucretia"** ▾

Created by Austin [redacted] on Oct 31, 2015 3:37 PM ★ Subscribed



Title of Artwork #1: Red Power

Author: Peter Blake

Historical Background: This artwork portrays the mistreatment of Native Americans in the United States. It is a symbol of Native American power and pride. This artwork shows the power of Native American culture and the respect they deserve in the United States.

Representation of Gender: This image shows a man as a power symbol and figure. The author uses a man to depict the essence of power and plays off the gender role of men being strong and powerful in society.

Title of Artwork #2: Lucretia

Author: Paolo Veronese

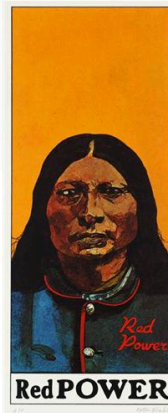
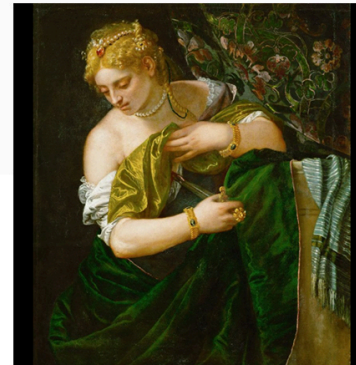
Historical Background: In the time of King Tarquinius Superbus, the Romans were attacking Adrea and the Kings son rode his horse and lodged at the home of Lucretia with his men. In the middle of the night the King's son snuck into Lucretia's room and raped her, when her husband returned home she told him what happened and to seek revenge and took her own life

Representation of Gender: This painting shows the power of the female gender and the pride women took in being pure and that they would rather die than be impure even though in this case it was rape that caused the impureness. This painting shows the strength of Lucretia and the power of the female gender.

Screen Shot 2015-10-31 at 3.06.36 PM.png (139.25 KB)

Screen Shot 2015-10-31 at 3.23.51 PM.png (508.86 KB)

Reply to Thread

Peter Blake, *Red Power*, 1972Paolo Veronese, *Lucretia*, 1580s

Reply to Thread

Filter by: **Unread** **Flagged**

Show: **Threaded** ▾



Ting Fang Chien ▾

Nov 4 at 12:05 AM

Comment to #1- I do not think this one fits our theme this time, but you can consider to saving it for your Inspired by Art. This picture could not see an apparent "gender role." According your description-"This picture shows a representation of male Indians and their oppression. In this picture the man looks stern and serious," it shows more about "cultural oppression" than "gender role" in a society. I would say if you found a female picture that oppressed from Indian's male culture, it would be more suitable. Please find another one to replace this picture even though you may not use this picture for your #9. Please be careful that do not overlap your choices with other classmates' images. Check before you updated.

#2- You need to clarify your interpretation. If she is a woman with power, does she has to care who will see her tragedy as impureness? That is from whose perspectives? If she really has power, did she need to kill herself?

<<< Replied to post below >>>

Authored by: Austin [REDACTED]
 Authored on: Oct 31, 2015 3:37 PM
 Subject: "Red Power" and "Lucretia"

Title of Artwork #1: Red Power

Author: Peter Blake

Historical Background: This artwork portrays the mistreatment of Native Americans in the United States. It is a symbol of Native American power and pride. This artwork shows the power of Native American culture and the respect they deserve in the United States.

Representation of Gender: This image shows a man as a power symbol and figure. The author uses a man to depict the essence of power and plays off the gender role of men being strong and powerful in society.

Title of Artwork #2: Lucretia

Author: Paolo Veronese

Historical Background: In the time of King Tarquinius Superbus, the Romans were attacking Adrea and the Kings son rode his horse and lodged at the home of Lucretia with his men. In the middle of the night the King's son snuck into Lucretia's room and raped her, when her husband returned home she told him what happened and to seek revenge and took her own life

Representation of Gender: This painting shows the power of the female gender and the pride women took in being pure and that they would rather die than be impure even though in this case it was rape that caused the impureness. This painting shows the strength of Lucretia and the power of the female gender.

↩ Reply



Austin [REDACTED]

Nov 4 at 2:08 PM

Title of Artwork: The Execution of Lady Jane Grey

Author: Paul Delaroche

Historical Background: Lady Jane Grey was executed for being a heretic due to being an ardent Roman Catholic in England during a Protestant reformation. The King of England was trying to turn England into a fully Protestant country but Lady Jane Grey was Roman Catholic and the next in line to rule England so she was executed.

Representation of Gender: This picture shows Lady Jane Grey as a woman of power and she was executed because of this power. Her ardent faith in the Roman Catholic religion and her position as next in line for the rule of England led to her ultimate demise.

Title of Artwork: Lucretia

Gender Representation: Lucretia was indeed a woman of power and high class. She would rather take her own life than live with the shame of being raped.

<<< Replied to post below >>>

Authored by: Austin [REDACTED]

Authored on: Oct 31, 2015 3:37 PM

Subject: "Red Power" and "Lucretia"

Title of Artwork #1: Red Power

Author: Peter Blake

Historical Background: This artwork portrays the mistreatment of Native Americans. This artwork shows the power of Native American culture and the

Representation of Gender: This image shows a man as a powerful figure, representing the gender role of men being strong and powerful in society.

Title of Artwork #2: Lucretia

Author: Paolo Veronese

Historical Background: In the time of King Tarquinius Superbus, the king of Rome, he seduced Lucretia with his men. In the middle of the night the King's son found out what happened and to seek revenge and took her own life.

Representation of Gender: This painting shows the power of the female figure, representing the gender role of women being powerful and influential in society.

Screen Shot 2015-11-04 at 2.01.41 PM.png (411.54 KB)

↩ Reply

Because the artwork "Red Power" that Austin found did not fit our topic, so he found another one instead and made the interpretation again



Paul Delaroche,
The Execution of Lady Jane Grey,
1834



Ting Fang Chien ▾

Nov 4 at 9:57 PM

Ok, this one can be used. Justine, could you please change one of your titles in the thread topic to this one? I cannot do that on my end.

If you are going to use this artwork, however, you have to think about the power structure. If she really held the power as a queen, why could other people who are not the royals could kill her?

<<< Replied to post below >>>

Authored by: Austin [REDACTED]

Authored on: Nov 4, 2015 2:08 PM

Subject: "Red Power" and "Lucretia"

Title of Artwork: The Execution of Lady Jane Grey

Author: Paul Delaroche

Historical Background: Lady Jane Grey was executed for being a heretic due to being an ardent Roman Catholic in England during a Protestant reformation. The King of England was trying to turn England into a fully Protestant country but Lady Jane Grey was Roman catholic and the next in line to rule England so she was executed.

Representation of Gender: This picture shows Lady Jane Grey as a woman of power and she was executed because of this power. Her ardent faith in the Roman Catholic religion and her position as next in line for the rule of England led to her ultimate demise.

Title of Artwork: Lucretia

Gender Respresentation: Lucretia was indeed a woman of power and high class. She would rather take her own life than live with the shame of being raped.

<<< Replied to post below >>>

Authored by: [REDACTED]

Authored on: Oct 31, 2015 3:37 PM

Subject: "Red Power" and "Lucretia"

Title of Artwork #1: Red Power

Author: Peter Blake

Historical Background: This artwork portrays the mistreatment of Native Americans in the United States. It is a symbol of Native American power and pride. This artwork shows the power of Native American culture and the respect they deserve in the United States.

Representation of Gender: This image shows a man as a power symbol and figure. The author uses a man to depict the essence of power and plays off the gender role of men being strong and powerful in society.

Title of Artwork #2: Lucretia

Author: Paolo Veronese

Historical Background: In the time of King Tarquinius Superbus, the Romans were attacking Adrea and the Kings son rode his horse and lodged at the home of Lucretia with his men. In the middle of the night the King's son snuck into Lucretia's room and raped her, when her husband returned home she told him what happened and to seek revenge and took her own life

Representation of Gender: This painting shows the power of the female gender and the pride women took in being pure and that they would rather